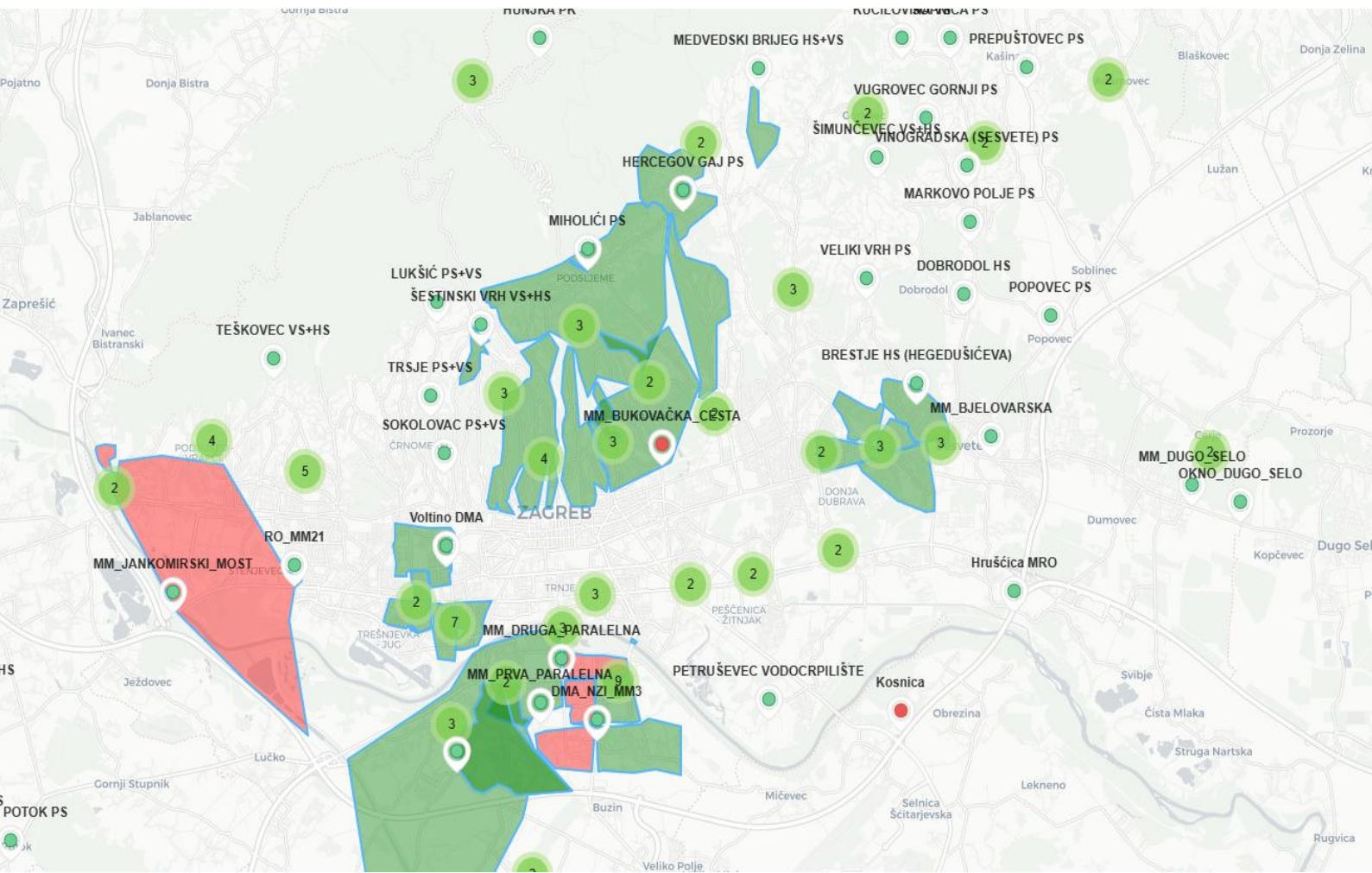


RICITY

All-in-one IoT platform with Leakage Solution module



Recognize problems before they arise.

A powerful web-based platform for real-time data collection, processing, and visualization granting you enhanced overview and improving your search for water losses.



Connect to
almost anything



Smart alarms

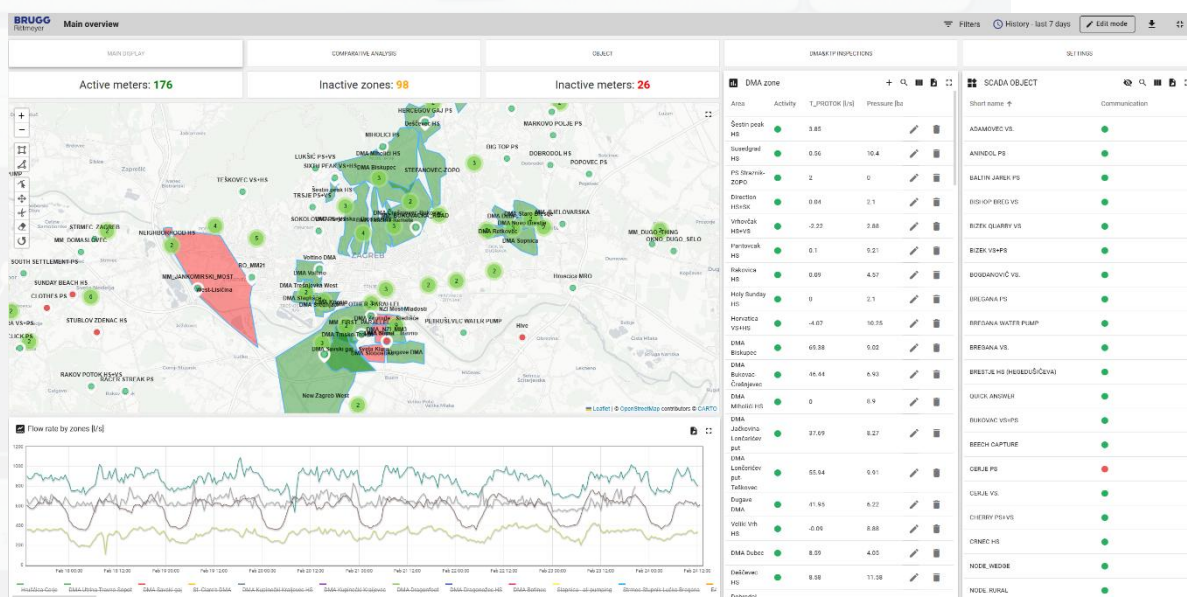


Long-term storage

Your benefits

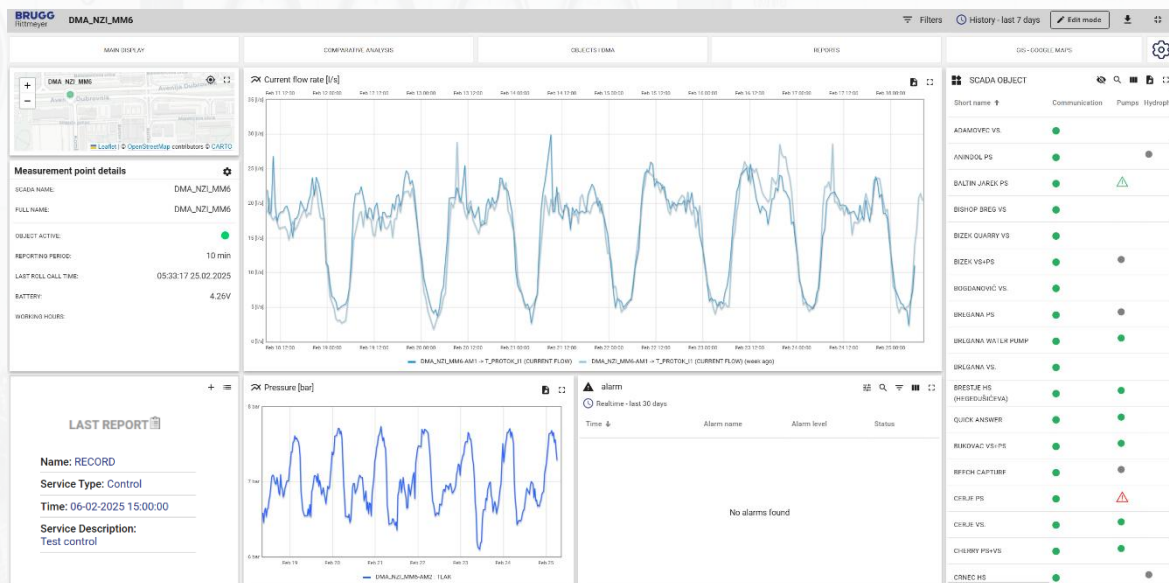
- Data consolidated in one place
- Standardized dashboards
- Available at any time, from any place and on every device
- Advanced visualization through line/bar charts, heat maps, symbolic widgets and many more
- User specific dashboards with access control
- All information at a glance

System overview



- Customizable and simple views of KPI's
 - Active/Service/Inactive Meters
 - List of DMA zones and measuring points
- Interactive, alarm color coded, map for a quick overview of the system
- Charts for the most important areas
- Active alarms with event descriptions

Assets overview



Easy dashboarding
Advanced visualisations



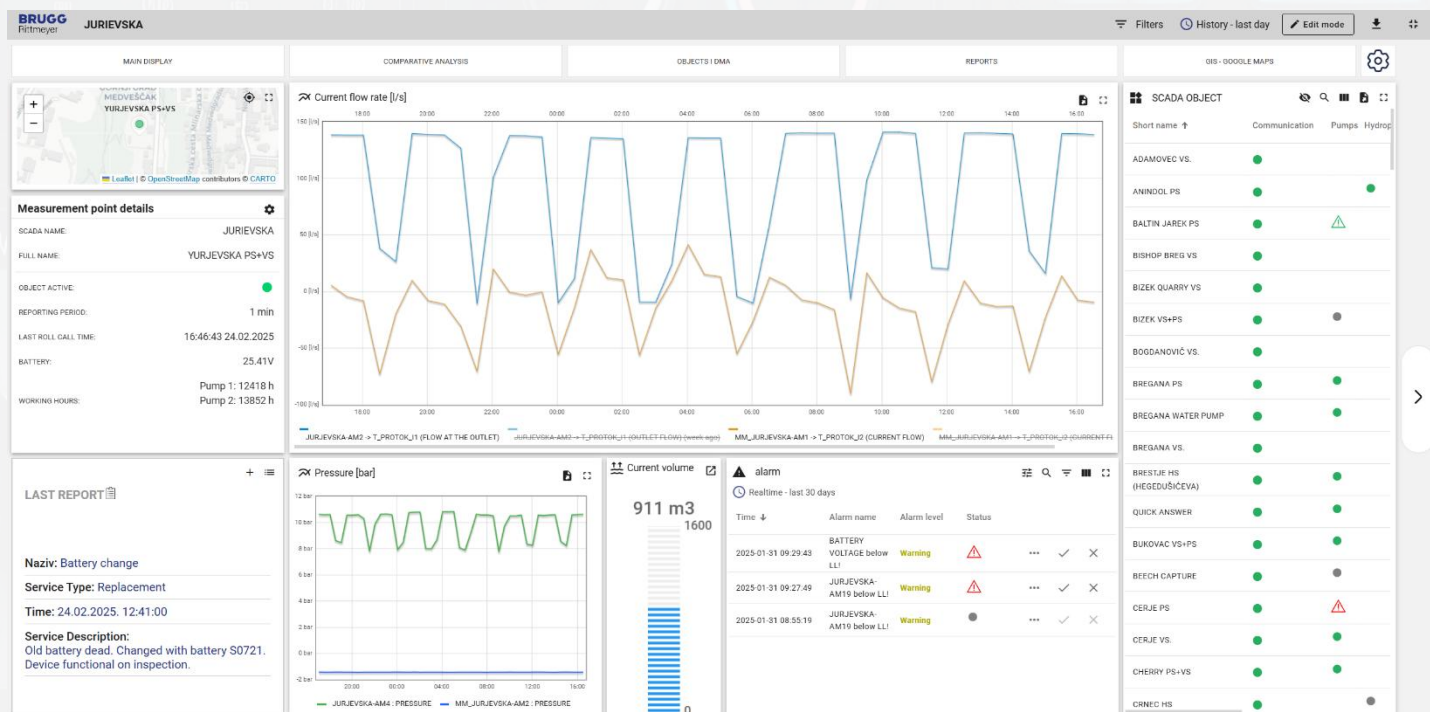
Integrated GIS

Analysis of data from measuring points

- User defined calculations
- Comparison of current and historical data
- Automatic charts updating with new data (without page refresh)
- Interactive data aggregations (MIN, MAX, AVG, SUM in chosen time window)
- Easy to use data filtering (e.g. show only night flow, peak pressure)
- User customizable dashboards

Asset management

- Record maintenance and inspections of equipment
- Detailed supervision of assets in the form of systematic recording of the condition of the equipment according to user-defined parameters (e.g. meter model, inventory number, manufacturer)
- Recording of service intervals and interventions per individual facility (work order, personnel who performed the work, relevant pictures, documentation)
- Alarms for regular maintenance cycles (e.g. primary-secondary pump switch, working hours limits, signalizations)



Set your alarms

Easy to define, on any measurement, sorted by severity



Alarms

<input type="checkbox"/>	Created time	Originator ↑	Type	Severity	Status	
<input type="checkbox"/>	2022-11-11 09:43:08	DMA Dubec	Zone inactive (communication lost)	Critical	Active Unacknowledged	⋮
<input type="checkbox"/>	2022-11-10 09:36:55	DMA Dugave	Day flow over limit	Major	Active Unacknowledged	⋮
<input type="checkbox"/>	2022-11-10 09:37:14	DMA Slobošina	Week flow 21% over last week	Indeterminate	Active Unacknowledged	⋮
<input type="checkbox"/>	2022-11-10 09:51:02	DMA Sopot	Pressure peak (7%)	Minor	Active Unacknowledged	⋮
<input type="checkbox"/>	2022-11-10 09:55:13	DMA Utrina - Travno	Night flow rising	Critical	Active Unacknowledged	⋮
<input type="checkbox"/>	2022-11-10 10:08:30	DMA Zapruđe - Središće	Battery on device MM_32 under 20%	Warning	Active Unacknowledged	⋮
<input type="checkbox"/>	2022-11-10 12:43:08	Novi Zagreb zapad	MM Freedom Bridge is not reporting!	Critical	Active Unacknowledged	⋮

Alarm limits: JURJEVSKA

Tag* JURJEVSKA-AM1: RAZINA VODOSPREME	Priority alarm* MINOR	Border type* equal	Limit amount* true	■	Add border
Tag* JURJEVSKA-AM1: RAZINA VODOSPREME	Priority alarm* MINOR	Border type* LL	Limit amount* 0	■	
Tag* JURJEVSKA-AM19: NAPON AKUMULATORA	Priority alarm* WARNING	Border type* LL	Limit amount* 27	■	

Cancel Save

Alarming

- Easy to set alarms
- Limits by exact or relative value (%)
- Simple in-app alarms (multi-coded: color, shape, text)
 - Remains active until user confirmation
 - Comment and assign to other users
- Notifications according to user-defined rules through:
 - Platform
 - Email
 - SMS
 - Phone call

- Simple parameterization (static and dynamic) of alarm events and process values via a graphical interface (e.g. value exceedance or percentage difference of the same measurement from the last week).

Data Explorer

Clear and customizable overview of your data.

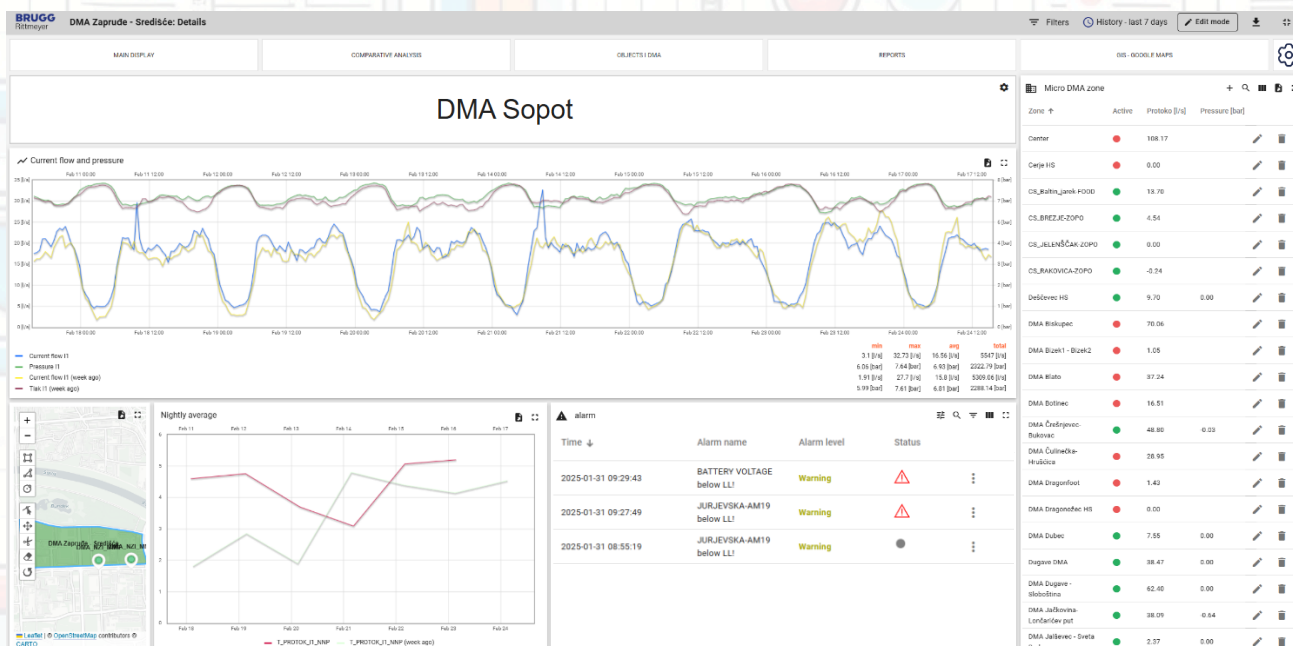


Dynamic Measurement Selection

- Compare your data between objects and/or DMA zones
- Everything on same chart for better overview
- Easily change between line, bar and state charts
- Automatic categorization according to units of measurement (e.g. different scale for flow and pressure)
- Store the current selection for later use under desired name

DMA Zones

Easily merge your measurement points into DMA Zones



Micro and Macro DMA zones

- Consolidate multiple measurement points into a single entity
- User-defined formulas, easy to change on your own at any time
- Recalculate data for all formulas on a newly created zone or calculation
- Data interpolation for sampling time synchronization of measurements
- Alarms for increased night flow, pressure drop/increase, significant flow changes
- Daily calculation of night flow
- Combine with Macro zones for better overview

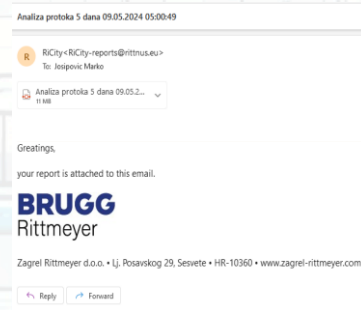
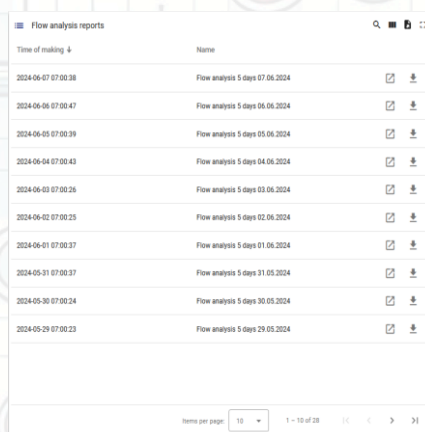
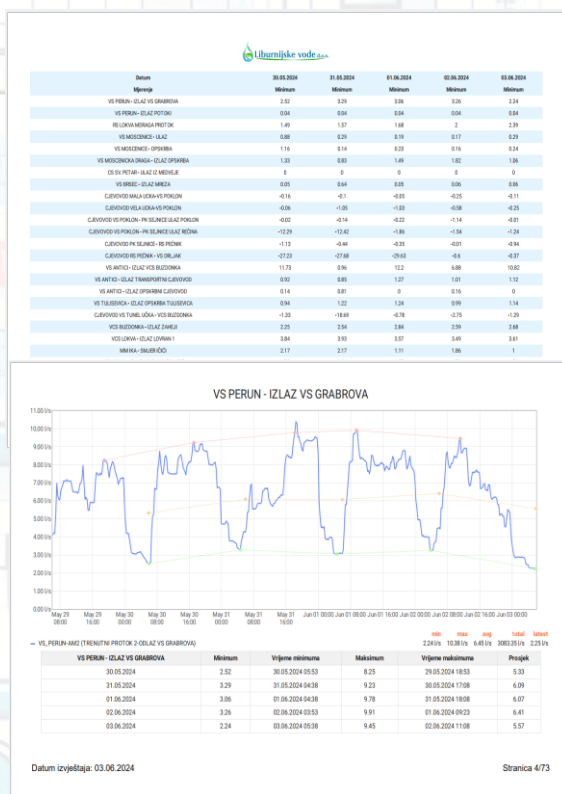
Excel and PDF reports

- On demand or by schedule
- In-app download or email delivery
- Formats:
 - Data tables: CSV, XLS and XLSX
 - Dashboards: PDF, JPEG and PNG
- Any data from the system can be used in a form of a table or dashboard widgets

PDF Example



Flow analytics 5 days on 28.06.pdf



Main RICITY features

Communication interfaces

- HTTPS
- MQTTS
- CoAP
- OPC-UA
- Plain TCP/UDP

Platform interconnections

- The Things Stack Industries, Lorient
- E+H and Siemens Cloud
- SigFox
- AWS and Azure IoT
- Tuya

Rule Chains (backend) features

- Data mapping
- Asset oriented data structure
- Easy to implement business logic
- Custom Excel and PDF reports

Dashboard perks

- Over 100 different chart types with flexibility of customization
- Mobile friendly
- Large portfolio of geographical maps
- Easy navigation
- Multi-user role level access with audit logs

Get firsthand experience from dashboards our customers use

Login URL: ricity.rittnus.eu

Please note that all dashboards are in language according to customer locality. Translation can be applied for different countries.



Zagreb

demo-zagreb@rittnus.eu
RittmeyerIsTheBest1904



Velika Gorica

demo-vg@rittnus.eu
RittmeyerIsTheBest1904



Opatija

demo-opatija@rittnus.eu
RittmeyerIsTheBest1904



Hrvatske Ceste

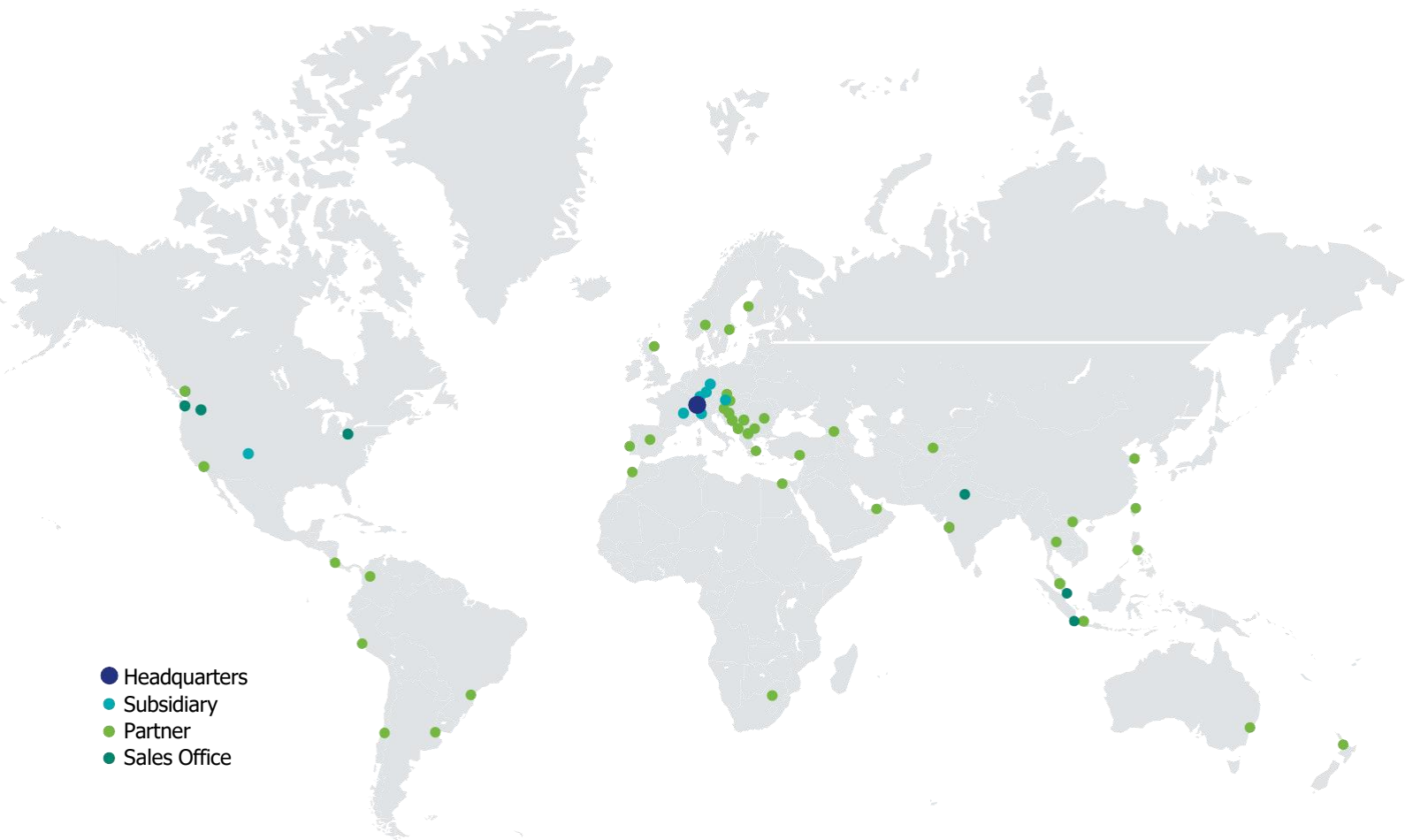
demo-hc@rittnus.eu
RittmeyerIsTheBest1904



Novi Vinodolski

demo-nv@rittnus.eu
RittmeyerIsTheBest1904

Contact us today



Stefan Mattle
Head of Scalable Optimization Solutions
stefan.mattle@rittmeyer.com
+41 41 767 13 39

Marko Josipović
Solution owner
marko.josipovic@rittmeyer.com
+385 95 883 8383

BRUGG
Rittmeyer

Rittmeyer AG • Inwilerriedstrasse 57 • POB 1660 • 6341 Baar • SWITZERLAND • rittmeyer.com

